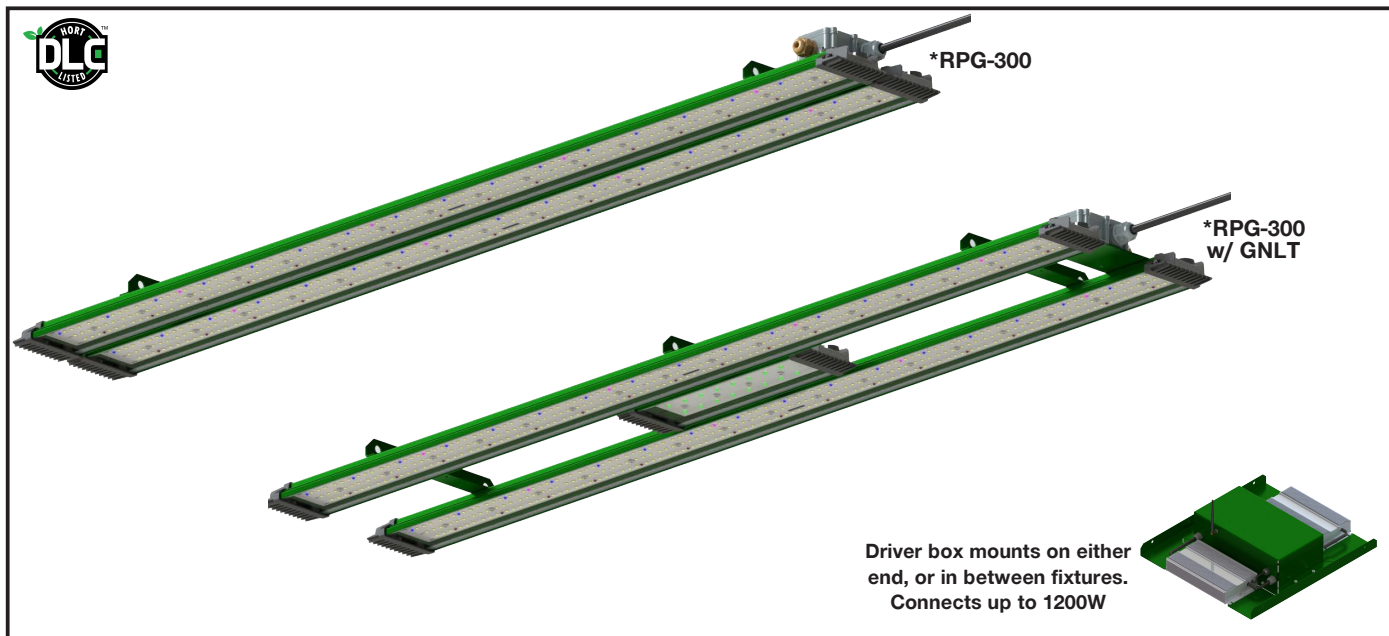


RPG Series LED Specifications



NOTE: Standard Package comes with GH Spectrum, 15' Cord, 5' Light Engine Cable, YH5, Plug Ready Whip (NP), and White Finish.

RPG Series Fixture Specifications	
Spectrum	GH (Greenhouse)
PPF (RPG-300, 600, 1200)	≥ (810, 1620, 3240) μmol/s
Input Power	300W, 600W, 1200W
Efficacy	≥ 2.7 μmol/J (non-lensed version)
Input Voltage	100-277V, 347V, & 480V
Weight (RPG-300, 600, 1200)	(8, 20, 45) lbs (Including Drivers)
Max Ambient Temperature	95°F / 35°C
Dimming	0-10V / Wireless Controls
Beam Angle	120°
Lifetime L90	60,000 hours
Power Factor	> 90%
Warranty	5 Year Standard Warranty

Electrical Load (A)							
Ordering nomenclature	System Watts	120V	208V	240V	277V	347V	480V
RPG-300	300	2.5	1.44	1.26	1.08	0.86	0.62
RPG-600	600	5.0	2.88	2.52	2.16	1.72	1.24
RPG-1200	1200	10.0	5.77	5	4.33	3.46	2.5

Quantity of Daisy Chained Fixtures Allowed on a 20A Breaker							
RPG-300	300	7	12	14	16	20	28
RPG-600	600	3	6	7	8	10	14
RPG-1200	1200	1	3	3	4	5	7

Ordering Information

MODEL	SPECTRUM	VOLTAGE	MOUNTING	DIMMING	CABLE OPTIONS	CORD	FINISH	PLUG OPTIONS	OPTIONS	
RPG-300 300W	GH Full Spectrum High Red	UNV 120 to 277	CBM- YH5 Cable Mount *2 point Inline Mounting 1-5' Adjustable Cable Mount Included	VWC Wireless Control	LECBL - 5 5' Light Engine Cables	15' CD 15' Cord	WH White CC Custom Color	N5 110-120V Plug NEMA 5-15P	GNLT Green Light	
RPG-600 600W		8 347				LECBL - 10 10' Light Engine Cables		DCHN - 10 10' Daisy Chain Whips		N6 220-240V Plug NEMA 6-15P
RPG-1200 1200W		5 480				LECBL - 15 15' Light Engine Cables		DCHN - 15 15' Daisy Chain Whips		NL7 277V Plug NEMA L7-15P NL24 347V Plug NEMA L24-20P NL8 480V Plug NEMA L8-20P NP No Plug-Plug Ready Whip
					*Length of cable to each light engine from driver box.	*Plugs not available for DCHN Please see Daisy Chain Plug Whip spec sheet				

RPG Series Flowering Footprint

DLC Horticulture Listed for maximum utility rebates. The RPG is optimally designed for greenhouse operations, being able to sleekly mount to Uni-strut with a remote-mounted driver box to create as little shading as possible.

Designed for high PPF and broad coverage over a large area, this is your go-to solution for large-scale Greenhouse environments.

With multiple spectral distributions available, we can customize your fixture to match your specific cultivation needs. The RPG is completely scalable from 150w to 1200w.

Housing

The LED light engines are constructed of heavy-duty aluminum, with heat radiating fins. The driver compartment allows for easy access, cooler operation and longer life.

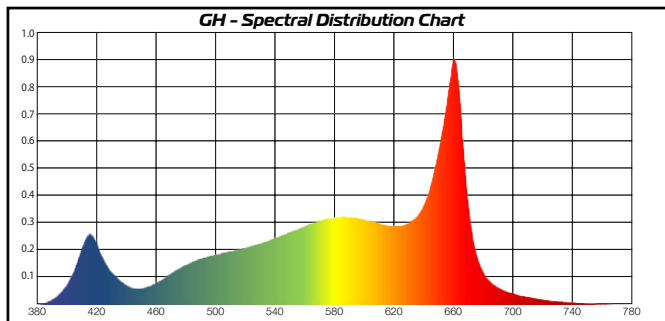
Quali-Guard® Finish

- The finish is a Quali-Guard® textured, chemically pretreated through a multiple-stage washer, electrostatically applied, thermoset polyester powder coat finish, with a minimum of 3-5 millimeter thickness. Finish is oven-baked at 400° F to promote maximum adherence and finish hardness. All finishes are available in standard and custom colors.
- Finish is guaranteed for five (5) years.

Thermal Management

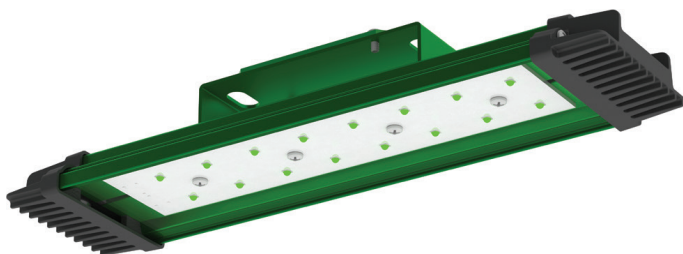
- The RPG Series provides excellent overall thermal management by maximizing the fixture's heat sink capabilities. This enables the RPG Series to withstand higher ambient temperatures and drive currents without degrading LED lifetime. The RPG Series has a low thermal resistance rating. The heat radiating fins create superior thermal management results.
- The L90 test determines the point in an LEDs life when it reaches 90 percent of its initial output. The RPG Series LEDs have been determined to last a minimum of 60,000 hours in 25°C environments. See LED Data Chart for additional test results.

Spectrums



RapidGrow Green Light Option

Rapidgrow's Green Light Option (GNLT) allows growers to have a bright green working light which does not activate any cycle of growth. This light can be powered either manually or remotely using RapidGrow's Wireless Control System. The Green Light Option's quick release system allows it to be removed and attached with ease.

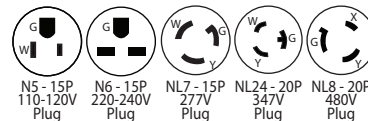


Electrical Assembly

The RPG Series is supplied with an adjustable current high-performance LED driver that accepts 120V to 277V or 347V to 480V, 50 Hz to 60 Hz, input. Power factor of ≥ 90%. 10 kV surge protector supplied as standard.

Standard Equipment

- 5' Light Engine Cables
- 15' Power Cord
- 0-10v Dimming Driver
- Plug Ready Whip (No Plug)
- In-Line Cable Mounting
- 5' Adjustable Cable Mount



*Any option outside of standard equipment will require a price adjustment

Warranty

- Five (5) year Limited Warranty. For full warranty information, please visit RapidGrowLED.com.

Listings

- DLC Horticulture Listed
- UL/cUL listed suitable for damp locations
- UL 8800
- Powder Tough™

RPG Standard Dimensions

MODEL	X	Y	Z
RPG-300	50"	6.5"	1.1"
RPG-600	50"	6.5"	1.1"
RPG-1200	50"	6.5"	1.1"

